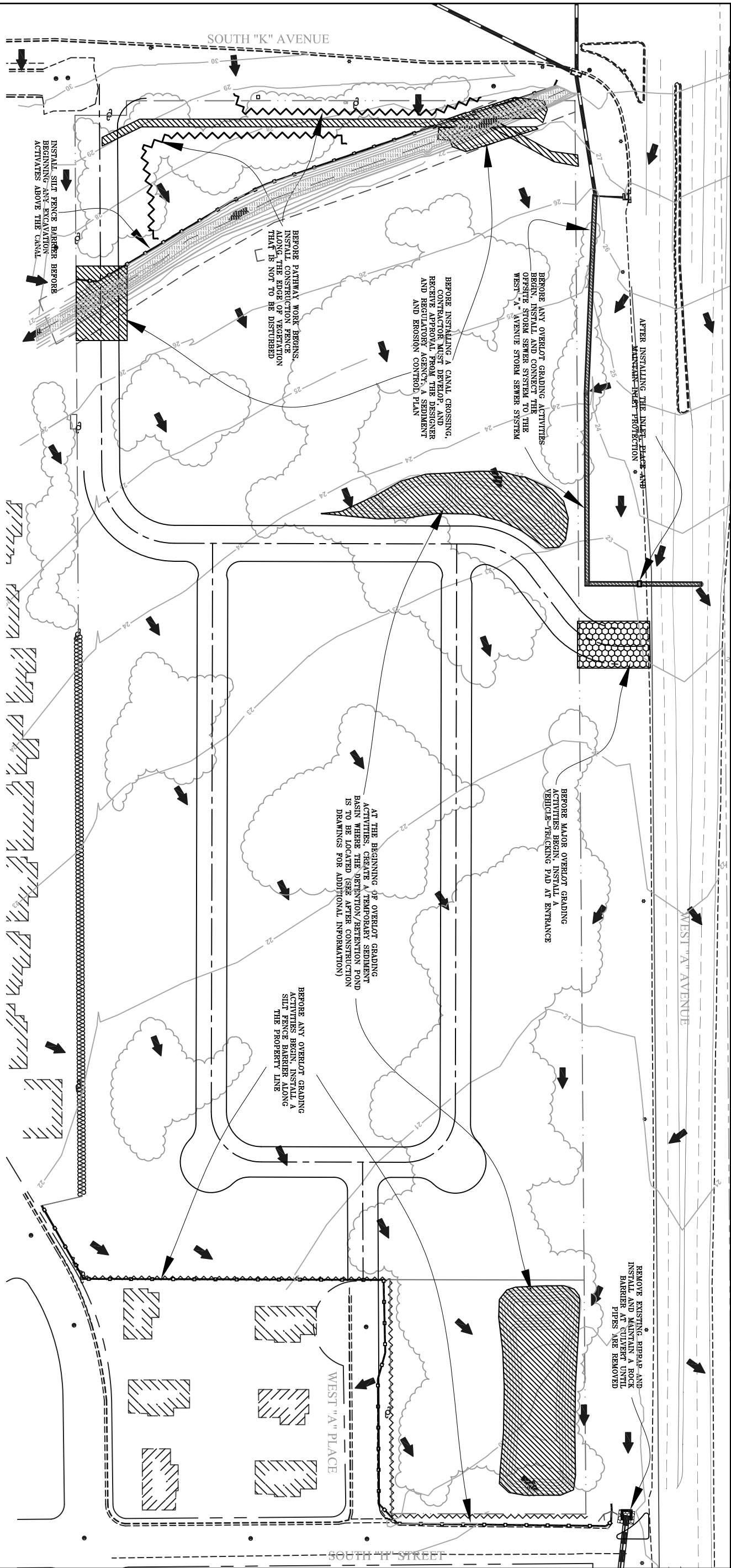


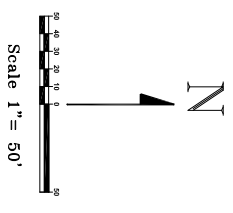
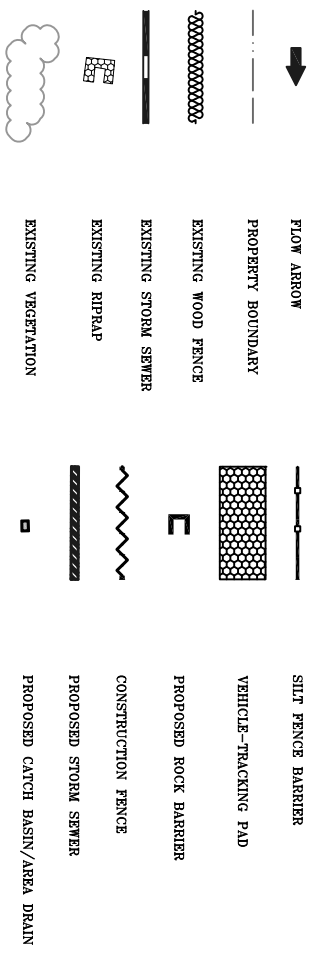
S&EC DRAWINGS FOR MODULE 2 SWPPP EXERCISE



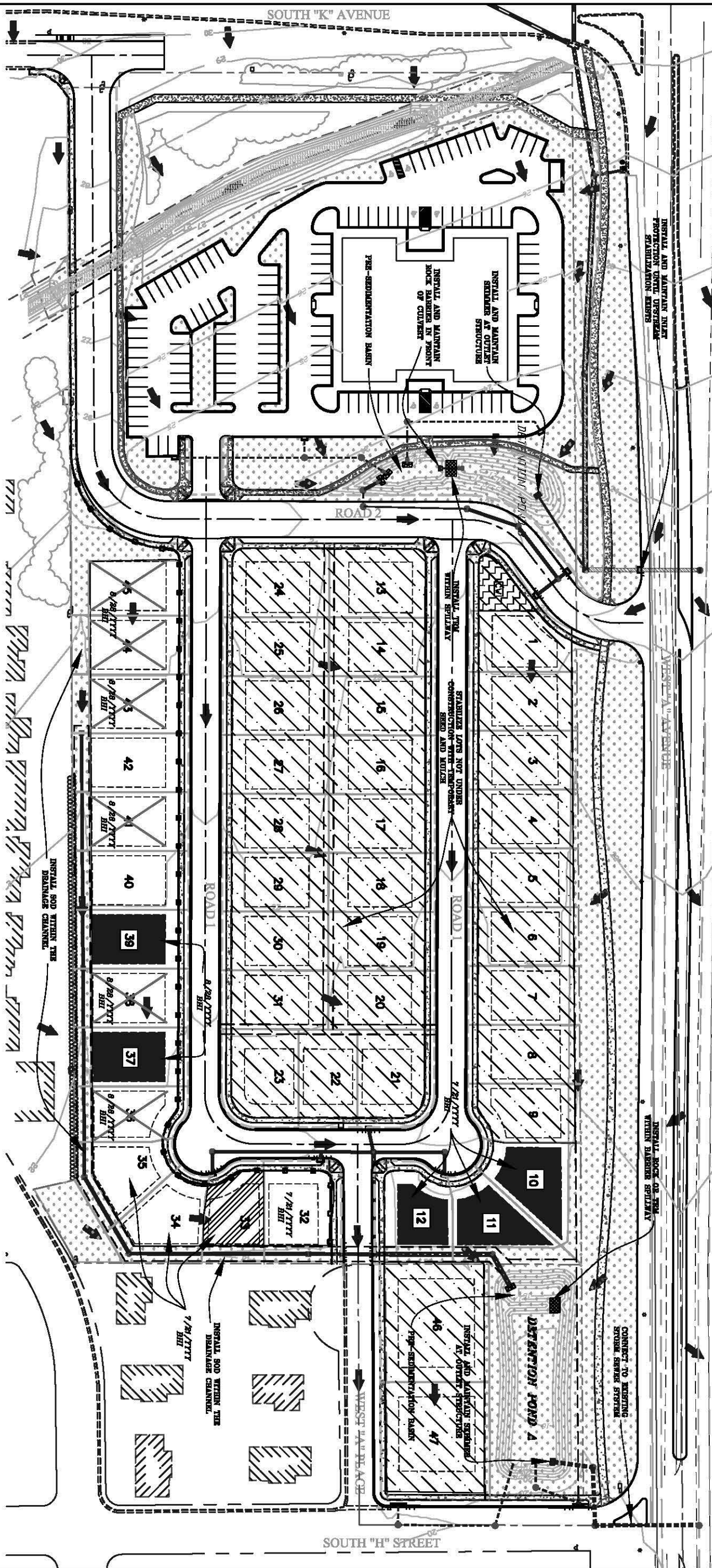
NOTES:

1. INSTALLATION OF THE OFFSITE STORM SEWER PIPE WITH A CONNECTION TO WEST "A" AVENUE SYSTEM MUST BE COMPLETED BEFORE BEGINNING ANY GRADING ACTIVITIES.
2. PRIOR TO OVERLOFT GRADING ACTIVITIES, INSTALL AND MAINTAIN SEDIMENT CONTROL BARRIERS, AS ILLUSTRATED.
3. AT THE BEGINNING OF OVERLOFT GRADING, ROUGH GRADE PROPOSED DETENTION AND RETENTION PONDS AND COVER THEM INTO A SEDIMENT BASIN WITH OUTLET STRUCTURES.
4. UPON COMPLETION OF INLETS ALONG WEST "A" AVENUE, INSTALL AND MAINTAIN INLET PROTECTION UNTIL APPROXIMATELY 80% OF THE SITE HAS BEEN BUILT OUT.
5. GENERAL MAINTENANCE OF SEDIMENT CONTROL STRUCTURES WILL INCLUDE ENSURING THAT ROCKS ARE NOT CLOGGED WITH SEDIMENT, MAINTAINING THE INTEGRITY OF ROCK BARRIERS, REPAIRING DAMAGED BARRIERS, REPLACEMENT OF SEDIMENT FILLED ROCK, REMOVAL OF SEDIMENT FROM INLET INSERTS, AND REMOVING SEDIMENT WHEN HALF THE STRUCTURE VOLUME IS LOST (E.G. BEHIND SILT FENCE BARRIERS).
6. SEDIMENT TRACKED ONTO OFFSITE STREETS WILL BE REMOVED WEEKLY OR AS NEEDED.
7. SOIL STOCKPILES AREA WILL BE LOCATED BY THE CONTRACTOR AND PROTECTED WITH SEDIMENT AND EROSION CONTROL BARRS AS DIRECTED BY THE DESIGNER OR ENGINEER.
8. INSPECTION OF ALL BARRS IS TO OCCUR AT LEAST ONCE EVERY 14 DAYS AND AFTER PRECIPITATION EVENTS THAT ARE 0.50-INCHES OR MORE. ALL NECESSARY MAINTENANCE AND REPAIRS SHALL BE COMPLETED WITHIN SEVEN DAYS, UNLESS OTHERWISE AGREED.
9. EROSION CONTROL MEASURES (SEE THE AFTER GRADING AND DURING CONSTRUCTION AND DEREGULATORY ACTIVITIES OCCUR.
10. THESE PLANS ARE SUBJECT TO CHANGE, WITH ALL CHANGES TO BE AGREED UPON BY THE DESIGNERS (OR HIS/HER REPRESENTATIVE) AND THE APPROPRIATE CITY/COUNTY/STATE OFFICIAL.

LEGEND



RESIDENTIAL AND COMMERCIAL
PRE-GRADING & DURING CONSTRUCTION
SEDIMENT CONTROL PLAN



NOTES:

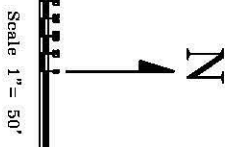
1. SEDIMENT CONTROL STRUCTURES ARE NOT TO BE REMOVED UNTIL 90% OR MORE OF THE SITE IS COVERED WITH VEGETATION, FORMAL LANDSCAPING, STRUCTURES, AND PAVEMENT, OR APPROVAL IS GIVEN BY THE DESIGNER.
2. THE DETENTION/RETENTION PONDS ARE TO REMAIN FUNCTIONAL AS SEDIMENT CONTAINMENT SYSTEMS, WHICH INCLUDES MAINTENANCE ON ALL OUTLET STRUCTURES, WHILE VERTICAL/HIG BOX CONSTRUCTION ACTIVITIES OCCUR.
3. LOTS UNDER CONSTRUCTION MUST HAVE SEDIMENT CONTROL BARRS INSTALLED ON DOWNSTREAM PROPERTY BOUNDARIES AS DETERMINED BY THE BUILDER.
4. PLANTING SEED AND APPLYING MULCH OR INSTALLING SOG WILL OCCUR WHILE CONSTRUCTION ACTIVITIES OCCUR AND AS DIRECTED BY THE DESIGNER.
5. UNLESS INSTRUCTED BY THE DESIGNER, TOTAL BLOCKS OF INLET OPENINGS BY FABRIC MATERIAL WILL NOT BE PERMITTED.
6. THE BUILDER IS RESPONSIBLE FOR GOOD HOUSEKEEPING ACTIVITIES TO ENSURE THE STREETS AND LOTS ARE KEPT RELATIVELY CLEAN WHILE CONSTRUCTION ACTIVITIES OCCUR.
7. THE BUILDER IS RESPONSIBLE FOR INSPECTIONS EVERY 14 DAYS AND AFTER PRECIPITATION EVENTS OF 0.60-INCHES OR MORE. THE BUILDER IS ALSO RESPONSIBLE FOR MAINTENANCE OF THESE PRELIMINARY SINK, INLETS AND OTHER SEDIMENT CONTAINMENT SYSTEMS IMMEDIATELY DOWNSTREAM OF THEIR PROPERTY.
8. THESE PLANS ARE SUBJECT TO MODIFICATIONS, WITH ALL CHANGES TO BE AGREED UPON BY THE DESIGNER (OR HIS/HERS REPRESENTATIVE) AND THE CITY OF APPROPRIATE CITY/COUNTY/STATE OFFICIAL.

UPDATES

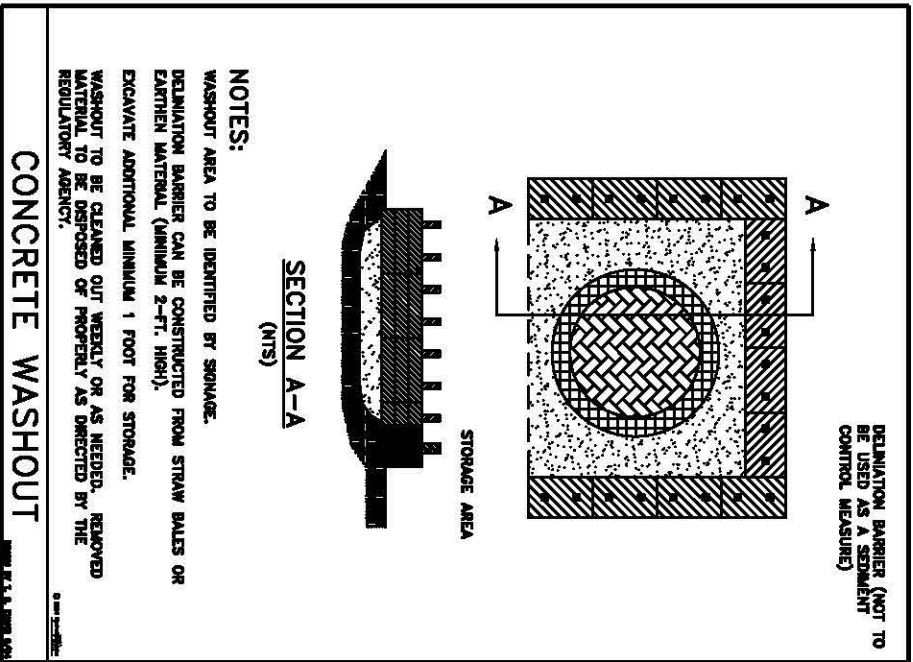
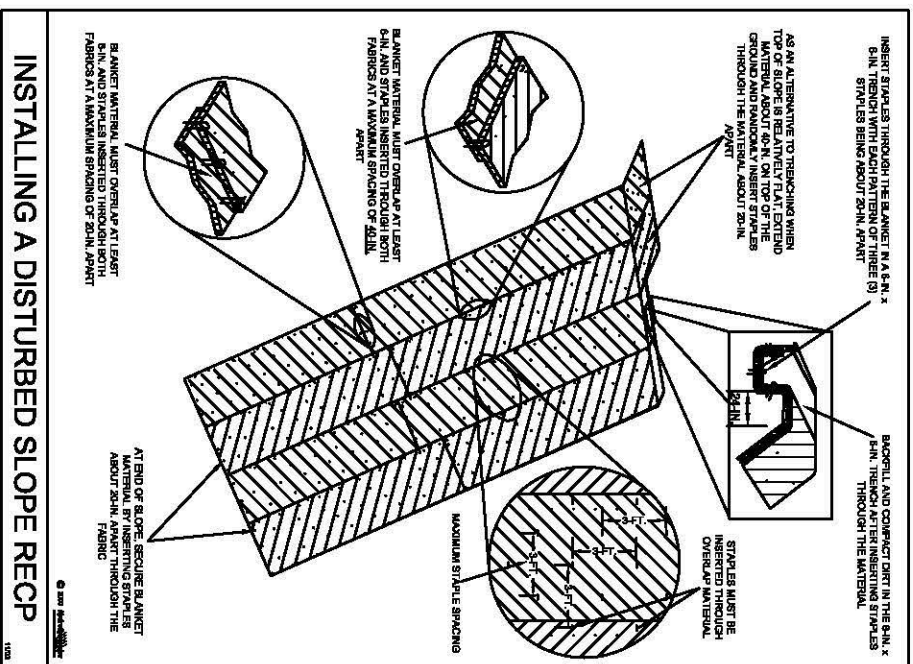
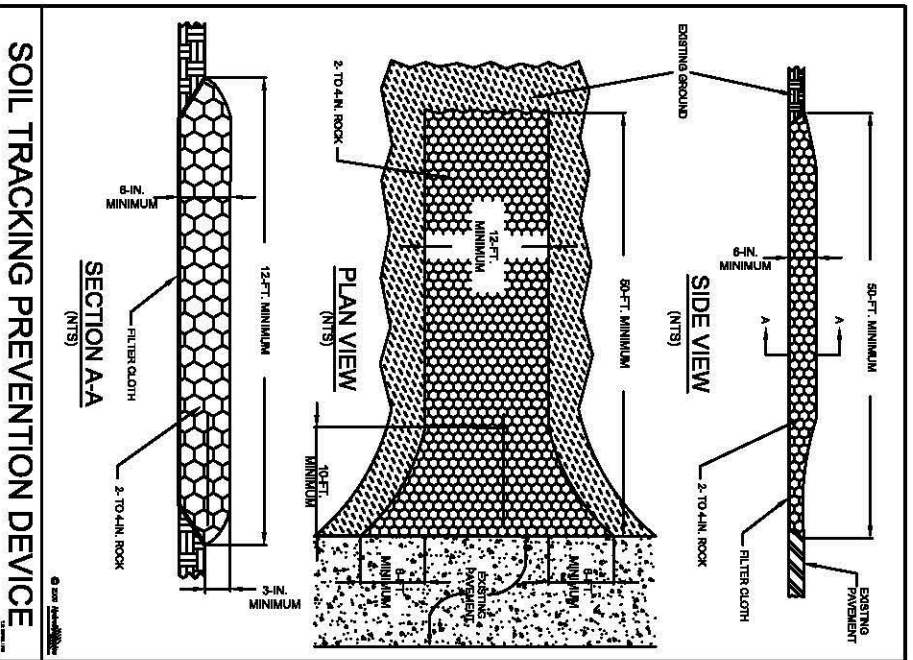
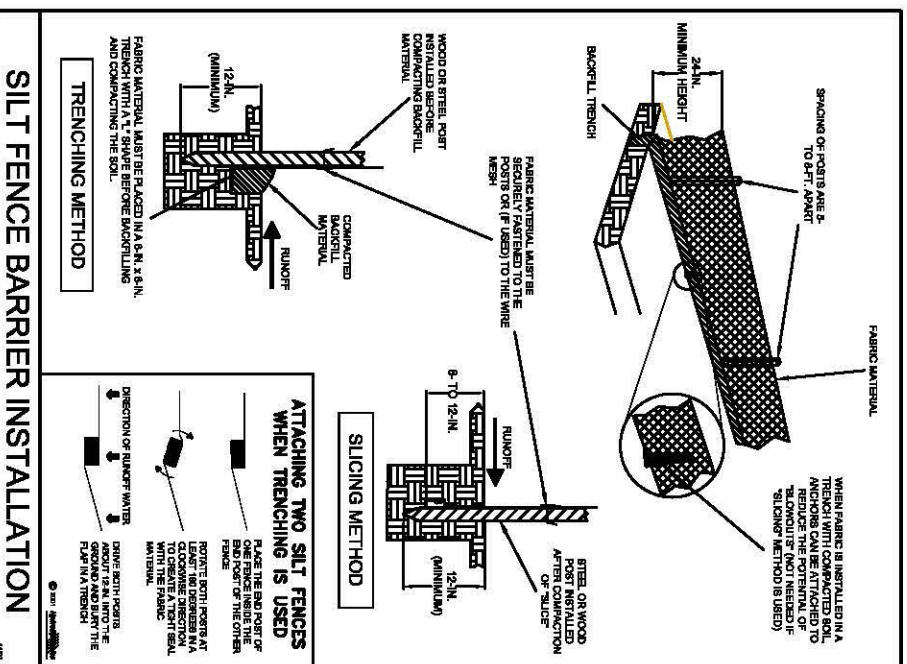
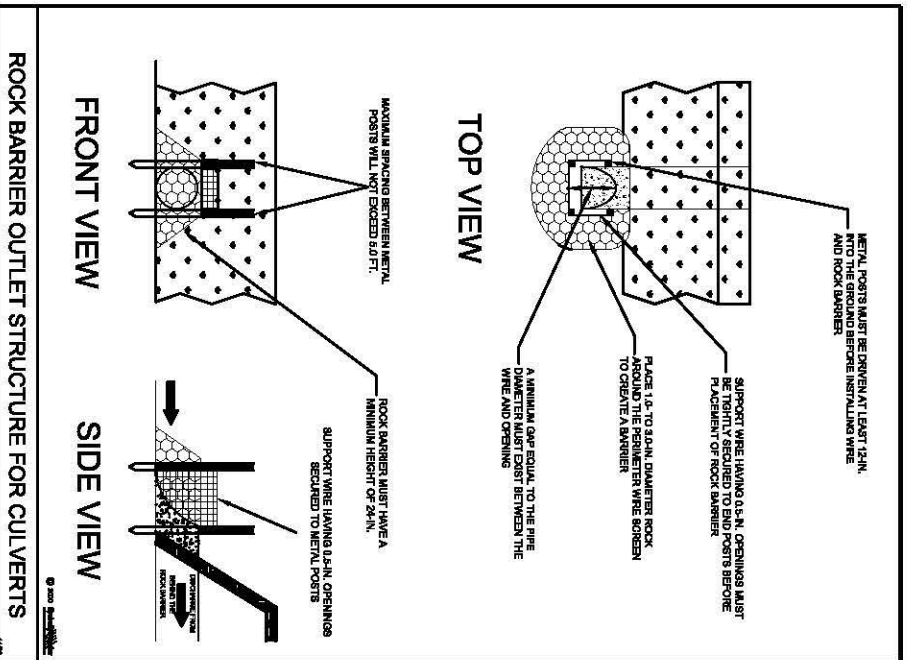
- Lot Under Construction
- Home Occupied
- Staging Area
- Concrete Washout
- Silt Fence Barrier

LEGEND

- FLOW ARROW
- SEED AND MULCH/LANDSCAPE
- TEMPORARY VEGETATION
- TYPIC REINFORCEMENT MAT
- EXISTING WOODEN FENCE
- EXISTING VEGETATION
- PROPERTY BOUNDARY
- EXISTING STORM SEWER
- PROPOSED INLET
- PROPOSED STORM SEWER
- PROPOSED REPAIR



RESIDENTIAL AND COMMERCIAL
AFTER GRADING AND DURING CONSTRUCTION
SEDIMENT AND EROSION CONTROL PLAN



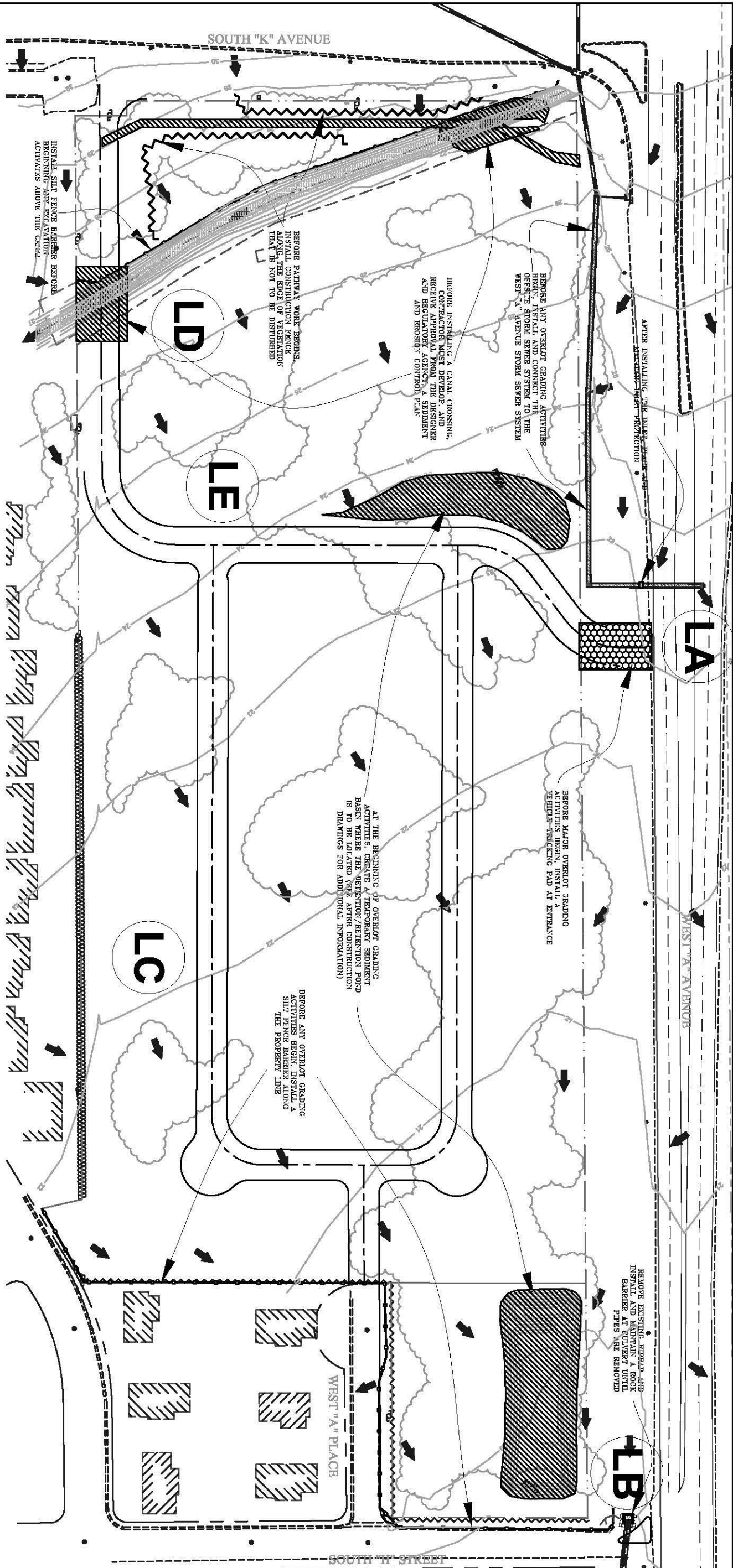
INSPECTION REQUIREMENTS FOR ALL INSTALLED BMPs

1. AT LEAST ONCE EVERY 14 DAYS, INSPECT AND REPAIR ANY DAMAGE FOUND.
2. WITHIN 24 HOURS AFTER PRECIPITATION EVENTS OF 0.50 INCHES OR MORE.

MAINTENANCE NOTES FOR THE BMPs SHOWN

- ROCK BARRIER:**
- REMOVE ACCUMULATED SEDIMENT FROM BEHIND THE ROCK BARRIER WHEN IT IS WITHIN 6-IN. OF THE TOP OF THE ROCK.
 - REMOVE ROCK BARRIER, POSTS, AND WIRE ONCE EROSION CONTROL PRACTICES ARE INSTALLED.
- SILT FENCE BARRIER:**
- REMOVE ACCUMULATED SEDIMENT FROM BEHIND THE SILT FENCE WHEN IT IS OVER 18-IN. DEEP.
 - REMOVE SILT FENCE FABRIC AND POSTS ONCE EROSION CONTROL PRACTICES ARE INSTALLED.
- VEHICLE TRACKING PAD:**
- REPLACE ROCK IN TRACKING PAD IF IT BECOMES CLOGGED WITH SEDIMENT.
 - REMOVE SEDIMENT ON ADJACENT STREETS, IF TRACKING IS OCCURRING.
- HILLSIDE ROLLED EROSION CONTROL PRODUCT:**
- REPAIR DAMAGED BLANKET MATERIAL.
 - REPAIR RILLS AND GULLIES IF FORMING BENEATH BLANKET.
- CONCRETE WASHOUT:**
- REPAIR DAMAGED STRAW BALES.
 - REMOVE ACCUMULATED MATERIAL WEEKLY OR AS NEEDED.

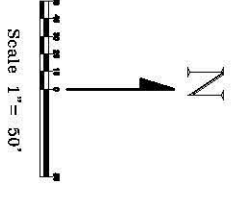
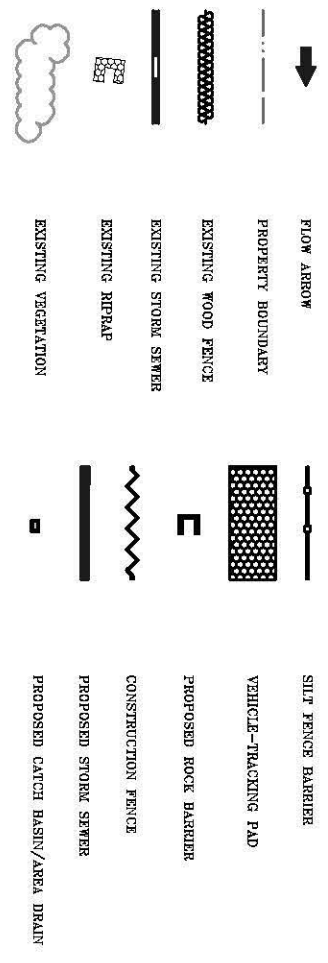
S&EC DRAWINGS FOR MODULE 4 SWPPP EXERCISES



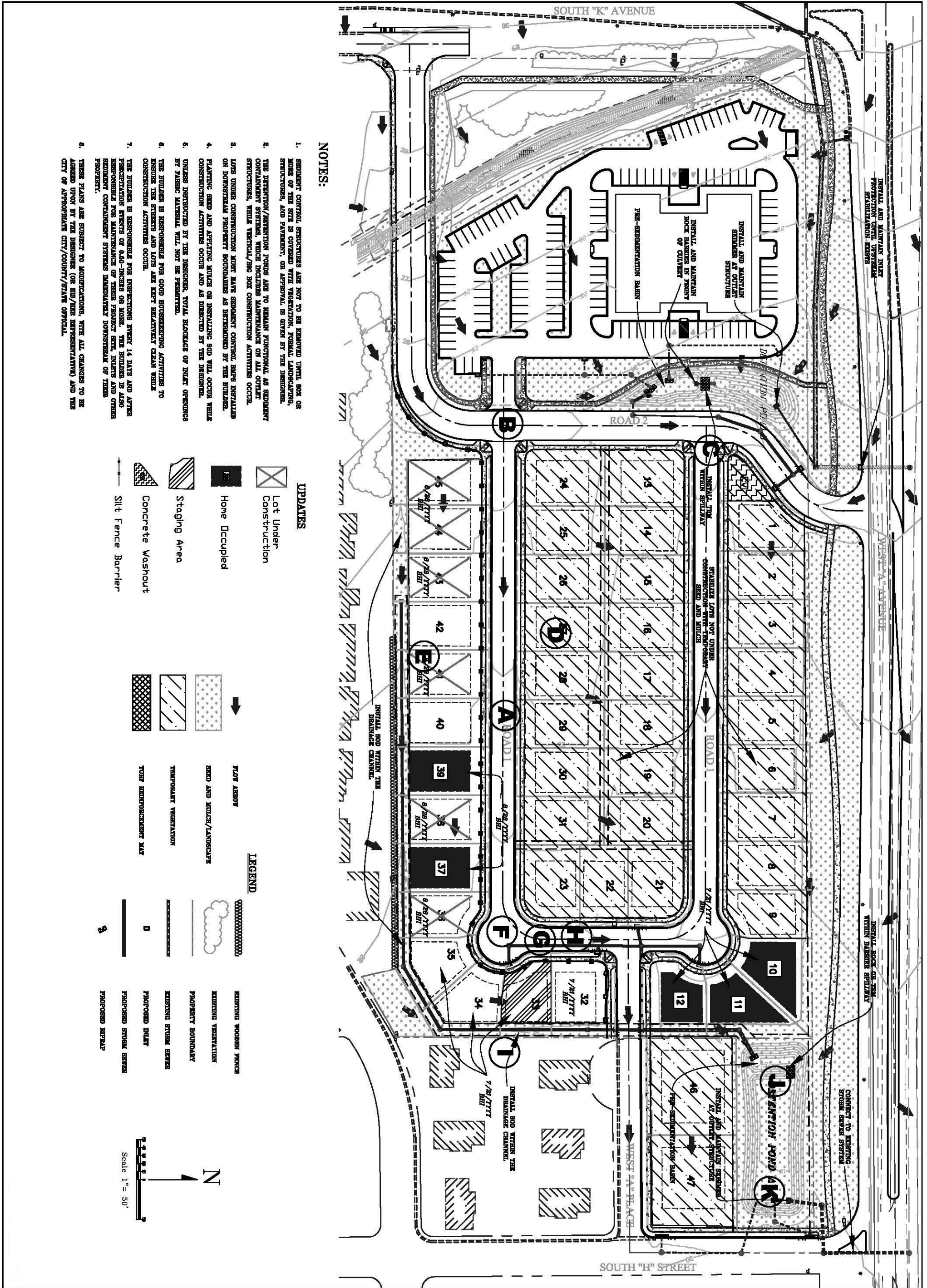
NOTES:

1. INSTALLATION OF THE OFFSITE STORM SEWER PIPE WITH A CONNECTION TO WEST "A" AVENUE SYSTEM MUST BE COMPLETED BEFORE BEGINNING ANY GRADING ACTIVITIES.
2. PRIOR TO OVERLOT GRADING ACTIVITIES, INSTALL AND MAINTAIN SEDIMENT CONTROL BARRIERS, AS ILLUSTRATED.
3. AT THE BEGINNING OF OVERLOT GRADING, ROUGH GRADE PROPOSED RETENTION AND DETENTION POUNDS AND COVER THEM INTO A SEDIMENT BASIN WITH OUTLET STRUCTURES.
4. UPON COMPLETION OF INTERS ALONG WEST "A" AVENUE, INSTALL AND MAINTAIN RIET PROTECTION UNTIL APPROXIMATELY 90% OF THE SITE HAS BEEN BUILT OUT.
5. GENERAL MAINTENANCE OF SEDIMENT CONTROL STRUCTURES WILL INCLUDE ENSURING THAT ROCKS ARE NOT CLOGGED WITH SEDIMENT, MAINTAINING THE INTEGRITY OF ROCK BARRIERS, REPAIRING DAMAGED BARRIERS, REPLACEMENT OF SEDIMENT FILLED ROCK, REMOVAL OF SEDIMENT FROM RIET INSERTS, AND REMOVING SEDIMENT WHEN HALF THE STRUCTURE VOLUME IS LOST (E.G. BEHIND SILT FENCE BARRIERS).
6. SEDIMENT TRACKED ONTO OFFSITE STREETS WILL BE REMOVED WEEKLY OR AS NEEDED.
7. SOIL STOCKPILES AREA WILL BE LOCATED BY THE CONTRACTOR AND PROTECTED WITH SEDIMENT AND EROSION CONTROL BARRS AS DIRECTED BY THE DESIGNER OR ENGINEER.
8. INSPECTION OF ALL BARRS IS TO OCCUR AT LEAST ONCE EVERY 14 DAYS AND AFTER PRECIPITATION EVENTS THAT ARE 0.50-INCHES OR MORE. ALL NECESSARY MAINTENANCE AND REPAIRS SHALL BE COMPLETED WITHIN SEVEN DAYS, UNLESS OTHERWISE AGREED.
9. EROSION CONTROL MEASURES (SEE THE AFTER GRADING AND DURING CONSTRUCTION DRAWINGS) WILL BE INSTALLED, INSPECTED, AND MAINTAINED WHILE CONSTRUCTION AND DEVELOPMENT ACTIVITIES OCCUR.
10. THESE PLANS ARE SUBJECT TO CHANGE. WITH ALL CHANGES TO BE AGREED UPON BY THE DESIGNERS (OR HIS/HER REPRESENTATIVE) AND THE APPROPRIATE CITY/COUNTY/STATE OFFICIAL.

LEGEND








RESIDENTIAL AND COMMERCIAL
PRE-GRADING & DURING CONSTRUCTION
SEDIMENT CONTROL PLAN














NOTES:

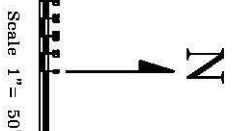
1. SEDIMENT CONTROL STRUCTURES ARE NOT TO BE REMOVED UNTIL SIX OR MORE OF THE SITE IS COVERED WITH VEGETATION, FORMAL LANDSCAPING, STRUCTURES, AND PAVEMENT, OR APPROVAL IS GIVEN BY THE DESIGNER.
2. THE DETENTION/RETENTION PONDS ARE TO REMAIN FUNCTIONAL AS SEDIMENT CONTAINMENT SYSTEMS, WHICH INCLUDES MAINTENANCE ON ALL OUTLET STRUCTURES, WHILE VERTICAL/HIGH BOX CONSTRUCTION ACTIVITIES OCCUR.
3. LOTS UNDER CONSTRUCTION MUST HAVE SEDIMENT CONTROL BARRS INSTALLED ON DOWNSIDE PROPERTY BOUNDARIES AS DETERMINED BY THE BUILDER.
4. PLANTING SEED AND APPLYING MULCH OR INSTALLING SOD WILL OCCUR WHILE CONSTRUCTION ACTIVITIES OCCUR AND AS DIRECTED BY THE DESIGNER.
5. UNLESS INSTRUCTED BY THE DESIGNER, TOTAL BLOCKS OF INLET OPENINGS BY FABRIC MATERIAL WILL NOT BE PERMITTED.
6. THE BUILDER IS RESPONSIBLE FOR GOOD HOUSEKEEPING ACTIVITIES TO ENSURE THE STREETS AND LOTS ARE KEPT RELATIVELY CLEAN WHILE CONSTRUCTION ACTIVITIES OCCUR.
7. THE BUILDER IS RESPONSIBLE FOR INSPECTIONS EVERY 14 DAYS AND AFTER PRECIPITATION EVENTS OF 0.60-INCHES OR MORE. THE BUILDER IS ALSO RESPONSIBLE FOR MAINTENANCE OF THESE PRELIMINARY SILT, INLETS AND OTHER SEDIMENT CONTAINMENT SYSTEMS IMMEDIATELY DOWNSTREAM OF THEIR PROPERTY.
8. THESE PLANS ARE SUBJECT TO MODIFICATIONS, WITH ALL CHANGES TO BE AGREED UPON BY THE DESIGNER (OR HIS/HERS REPRESENTATIVE) AND THE CITY OR APPROPRIATE CITY/COUNTY/STATE OFFICIAL.

UPDATES

-  Lot Under Construction
-  Home Occupied
-  Staging Area
-  Concrete Washout
-  Silt Fence Barrier

LEGEND

-  FLOW ARROW
-  SEED AND MULCH/LANDSCAPE
-  TEMPORARY VEGETATION
-  TYPIC REINFORCEMENT MAT
-  EXISTING WOODEN FENCE
-  EXISTING VEGETATION
-  PROPERTY BOUNDARY
-  EXISTING STORM SEWER
-  PROPOSED INLET
-  PROPOSED STORM SEWER
-  PROPOSED REPAIR



RESIDENTIAL AND COMMERCIAL
AFTER GRADING AND DURING CONSTRUCTION
SEDIMENT AND EROSION CONTROL PLAN

